

County Initiated General Plan Amendment 960 Project List: Parcel Specific Consideration

Area Plan	Exhibit	General Plan (Existing)	Acres	General Plan (Proposed)
Western Coachella Valley	C1-1	OS-R	0.11	MDR
Western Coachella Valley	C1-2	None	1.12	CR
Palo Verde Valley	C1-3	None	0.27	MDR
Southwest	C1-5	RM	25.69	RR
Southwest	C1-5	RR	4.15	EDR-RC
Southwest	C1-5	RM	38.24	EDR-RC
REMAP	C1-6	VLDR-CD	1.58	CT
REMAP	C1-6	CR	1.01	VLDR-CD
REMAP	C1-6	CR	3.98	CT
Eastern Coachella Valley	C2-1b	OS-CH	454	OS-RUR
Western Coachella Valley	C2-2	OS-CH	3.83	MDR
REMAP	C2-3b	OS-CH	35.84	OS-RUR
REMAP	C2-4	OS-CH	40.52	OS-RUR
REMAP	C2-5	OS-CH	38.18	OS-RUR
East County - Desert	C2-6	OS-CH	4.72	OS-RUR
Eastern Coachella Valley	C2-7b	OS-CH	192.17	OS-RUR
Western Coachella Valley	C2-8b	OS-CH	71.44	RR
Elsinore	C2-9	OS-CH	23.63	RR
Elsinore	C2-9	OS-CH	16.77	RM
Elsinore	C2-10	OS-CH	30.44	RR
Elsinore	C2-11	OS-CH	82.76	RM
Elsinore	C2-12	OS-CH	46.06	RM
Elsinore	C2-12	OS-CH	62.18	RR
Elsinore	C2-12	OS-CH	2.99	CT
Southwest	C2-13b	OS-CH	557.48	OS-RUR
Southwest	C2-14	OS-CH	40.8	RM
Southwest	C2-15	OS-CH	83.63	EDR-CD
Southwest	C2-15	OS-CH	15.65	OS-RUR
REMAP*	C2-17b	OS-CH	857.3	OS-RUR
Western Coachella Valley	C2-20	OS-CH	5.51	RR
Western Coachella Valley	C2-21	OS-CH	147.39	RR
Eastern Coachella Valley	C2-22a	OS-CH	20.15	RR
Eastern Coachella Valley	C2-22a	OS-CH	133.48	RD
Eastern Coachella Valley	C2-22a	OS-CH	6.43	EDR
Eastern Coachella Valley	C2-22a	OS-CH	0.66	MDR
Reche Canyon/Badlands	C2-23b	OS-CH	154.63	OS-RUR
Western Coachella Valley	C2-24	OS-CH	151.74	RR
Lake Mathew/Woodcrest	C3-1	PF	5.62	RR
Lake Mathew/Woodcrest	C3-1	PF	3.97	RM
Jurupa	C3-2	PF	20.19	LI w/Closed Landfill Overlay
Reche Canyon/Badlands	C3-3 (Old C6-6)	RM	69.11	PF
Western Coachella Valley**	C3-4	PF	80.51	MDR w/Closed Landfill Overlay
Harvest Valley/Winchester**	C3-5	PF	5.14	MDR w/Closed Landfill Overlay
Harvest Valley/Winchester	C3-5	PF	10.1	MDR
Temescal Canyon	C3-6	PF	0.12	OS-MR

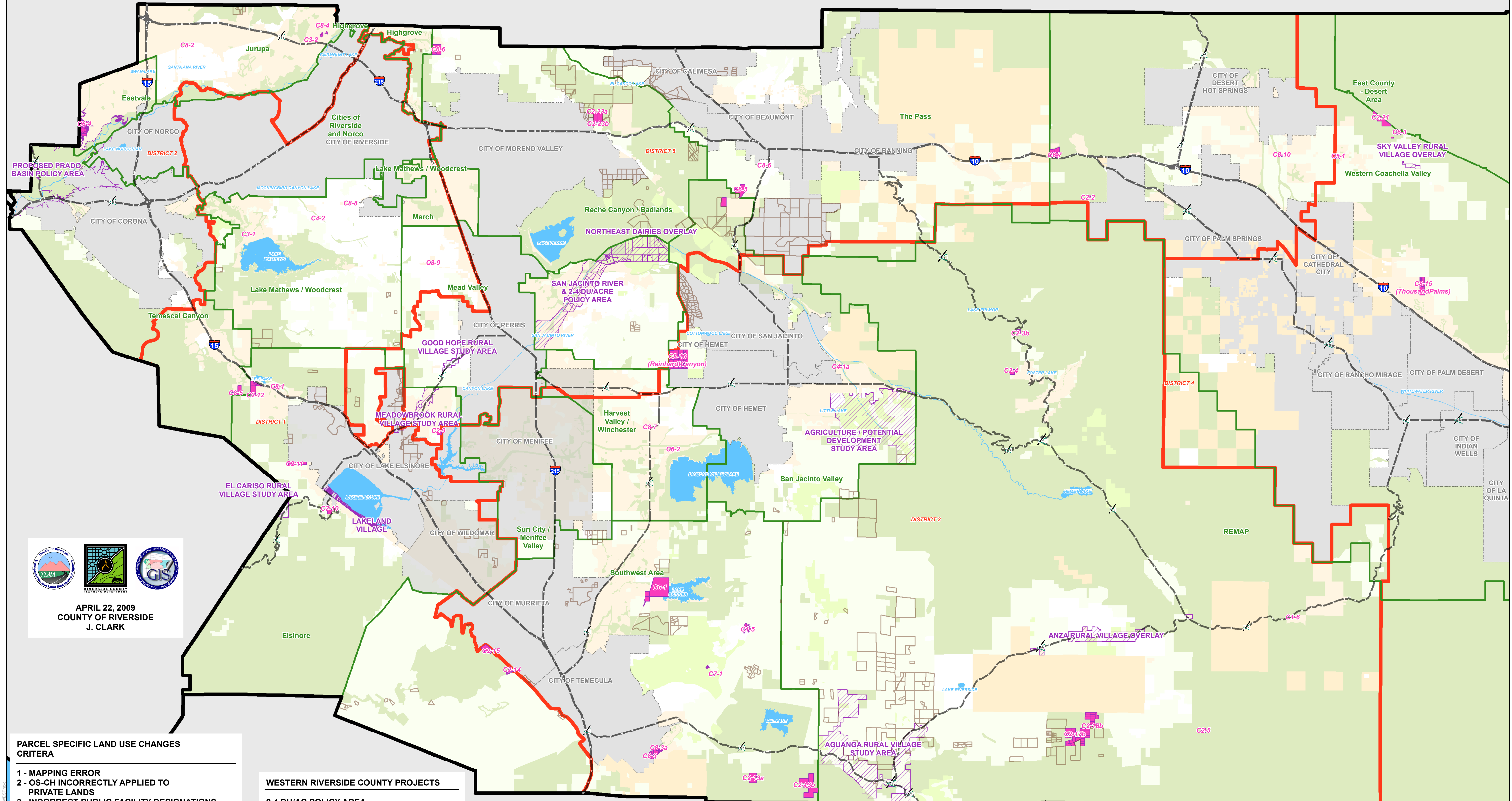
Temescal Canyon	C3-6	PF	0.15	Not yet determined
San Jacinto Valley	C4-1a	OS-C	3.47	MDR
Lake Mathew/Woodcrest	C4-2	OS-C	4.57	MDR
Western Coachella Valley	C4-3	OS-C	19.63	RR
Western Coachella Valley	C5-1	OS-R	37.63	MDR
Southwest	C6-1	OS-CH	273.01	PF
Harvest Valley/Winchester	C6-2	OS-CH	7.73	PF
Western Coachella Valley	C6-3	OS-RUR	36.01	PF
Eastvale	C6-4a	LDR	40.38	OS-C
Eastvale	C6-4a	MDR	19.96	OS-C
Eastvale	C6-4a	AG	109.28	OS-C
The Pass	C6-5	OS-RUR	80.18	PF
The Pass	C6-5	RM	35.98	PF
Western Coachella Valley	C6-7	OS-RUR	138.32	PF
Reche Canyon/Badlands**	C6-8	OS-CH	70.87	PF
Eastern Coachella Valley**	C6-9	AG	9.76	PF
Southwest	C7-1	AG	11.63	EDR-RC
Elsinore	C8-1	RR	16.61	LI
Eastvale	C8-2	LI	6.14	LDR-RC
Southwest	C8-3a	MDR	5.5	LDR
Jurupa	C8-4	LI	0.46	MHDR
Temescal Canyon	C8-5	RR	5.6	VLDR
Temescal Canyon	C8-5	RR	19	MDR
Temescal Canyon	C8-5	RR	57.6	OS-CH
Lake Mathew/Woodcrest	C8-8	VLDR-RC	1.01	CR
Mead Valley	C8-9	LDR-RC	13.96	CR
Western Coachella Valley	C8-10	OS-W	0.889	LI
Western Coachella Valley	C8-10	RR	8.081	LI
Eastern Coachella Valley	C8-11	RD	133.48	RR
Eastern Coachella Valley	C8-12	RD	148.3	RR
Eastern Coachella Valley	C8-13	RD	424.29	RR
Eastern Coachella Valley	C8-14	RD	320.93	RR
Western Coachella Valley	C8-15	MDR	144.06	VLDR
Western Coachella Valley	C8-15	CR	8.7	VLDR
San Jacinto Valley	C8-16	LDR	281.3	RR
Eastern Coachella Valley	Fish Farm	BP	124.1	AG
Eastern Coachella Valley	Fish Farm	LI	104.7	AG
Eastern Coachella Valley	Fish Farm	MDR	76.7	AG
Eastern Coachella Valley	Fish Farm	OS-R	190.9	AG
Eastern Coachella Valley	Fish Farm	OS-W	281.3	AG
Eastern Coachella Valley	Fish Farm	VHDR	57.4	AG
Eastern Coachella Valley	Fish Farm	VLDR	112.7	AG
Eastern Coachella Valley	Fish Farm	CR	8.3	AG
Regional Conservation Authority	RCA Acquired	Various	23966	OS-CH

* The item is in the process of being reviewed by EPD and RCA for its accuracy

** Item not yet shown on map

FIGURE 3a - KEY REGIONS OF INTEREST FOR GPA 960 (WESTERN COUNTY)

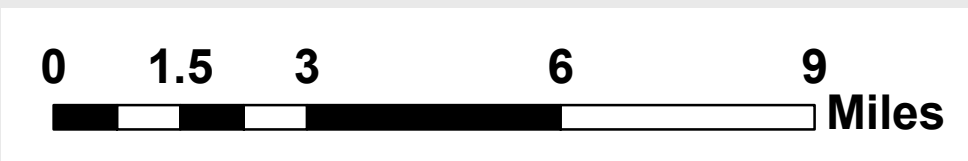
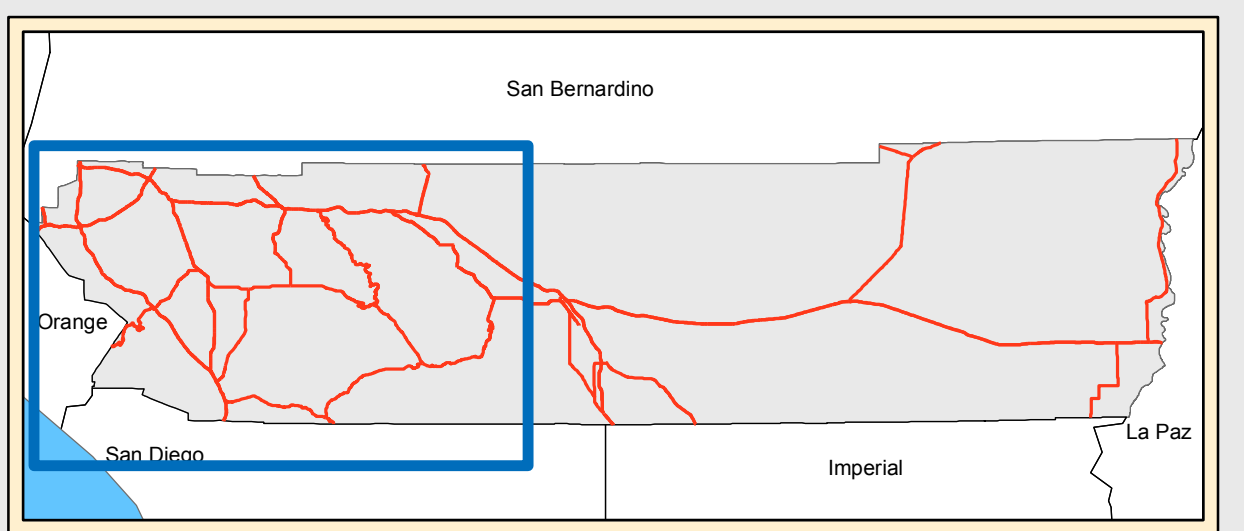
San Bernardino County



APRIL 22, 2009
 COUNTY OF RIVERSIDE
 J. CLARK

- PARCEL SPECIFIC LAND USE CHANGES CRITERIA**
- 1 - MAPPING ERROR
 - 2 - OS-CH INCORRECTLY APPLIED TO PRIVATE LANDS
 - 3 - INCORRECT PUBLIC FACILITY DESIGNATIONS
 - 4 - INCORRECT OPEN SPACE - CONSERVATION DESIGNATION ON PRIVATE LANDS
 - 5 - INCORRECT OPEN SPACE - RECREATION DESIGNATION
 - 6 - AREAS THAT NEED TO BE DESIGNED FOR PUBLIC FACILITY USE
 - 7 - LAND USE DESIGNATION NEEDS TO BE CHANGED BECAUSE TR/PLOT PLAN SUBMITTED TO THE ADOPTION BUT DURING THE GP 2003 UPDATE AND WAS APPROVED
 - 8 - EXECUTIVE DIRECTIVE
 - 9 - RCA - ACQUIRED CONSERVATION LAND

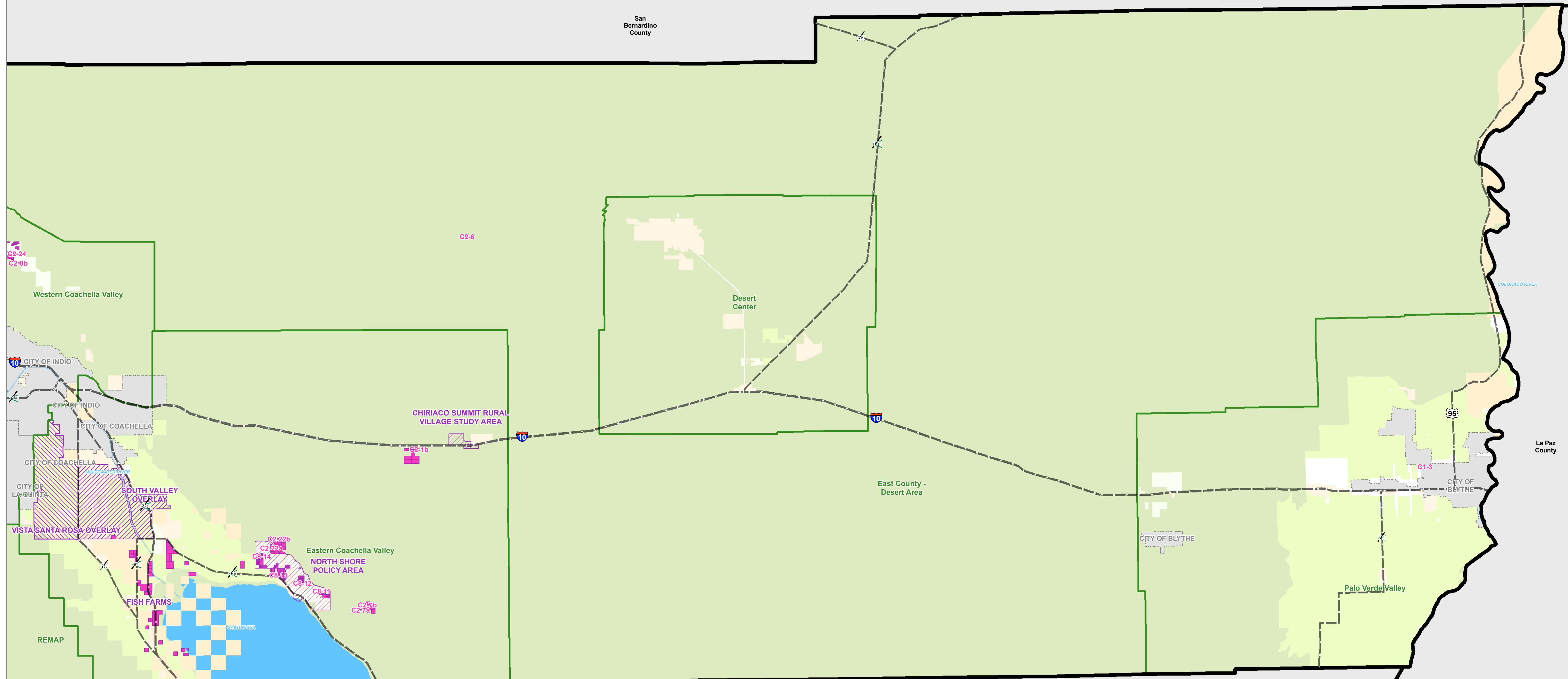
- WESTERN RIVERSIDE COUNTY PROJECTS**
- 2-4 DU/AC POLICY AREA
 - AGRICULTURE / POTENTIAL DEV. STUDY AREA
 - AGUANGA R.V.S.A.
 - ANZA R.V.O.
 - COMMUNITY CENTER L.U. & OVERLAY
 - EL CARISO R.V.S.A.
 - GOOD HOPE R.V.S.A.
 - LAKELAND VILLAGE
 - MEADOWBROOK R.V.S.A.
 - NORTHEAST DAIRIES OVERLAY
 - PRADO BASIN POLICY AREA
 - SAN JACINTO RIVER POLICY AREA
 - SKY VALLEY R.V.O.



Disclaimer: Maps and data are to be used for reference purposes only. Map features are approximate, and are not necessarily accurate to surveying or engineering standards. The County of Riverside makes no warranty or guarantee as to the content (the source is often third party), accuracy, timeliness, or completeness of any of the data provided, and assumes no legal responsibility for the information contained on this map. Any use of this product with respect to accuracy and precision shall be the sole responsibility of the user.

- | | |
|--|---|
| ■ AGRICULTURE | ■ PARCEL SPECIFIC LANDUSE CHANGES |
| ■ RURAL | □ AREA PLAN BOUNDARIES |
| ■ RURAL COMMUNITY | □ SUPERVISORAL DISTRICT |
| ■ OPEN SPACE | □ COMMUNITY CENTERS & OVERLAYS |
| ■ COMMUNITY DEVELOPMENT | □ TRIBAL LANDS |
| □ RCA ACQUIRED LANDS | □ CITIES |
| ■ WATER BODIES | |

FIGURE 3b - KEY REGIONS OF INTEREST FOR GPA 960 (EASTERN COUNTY)

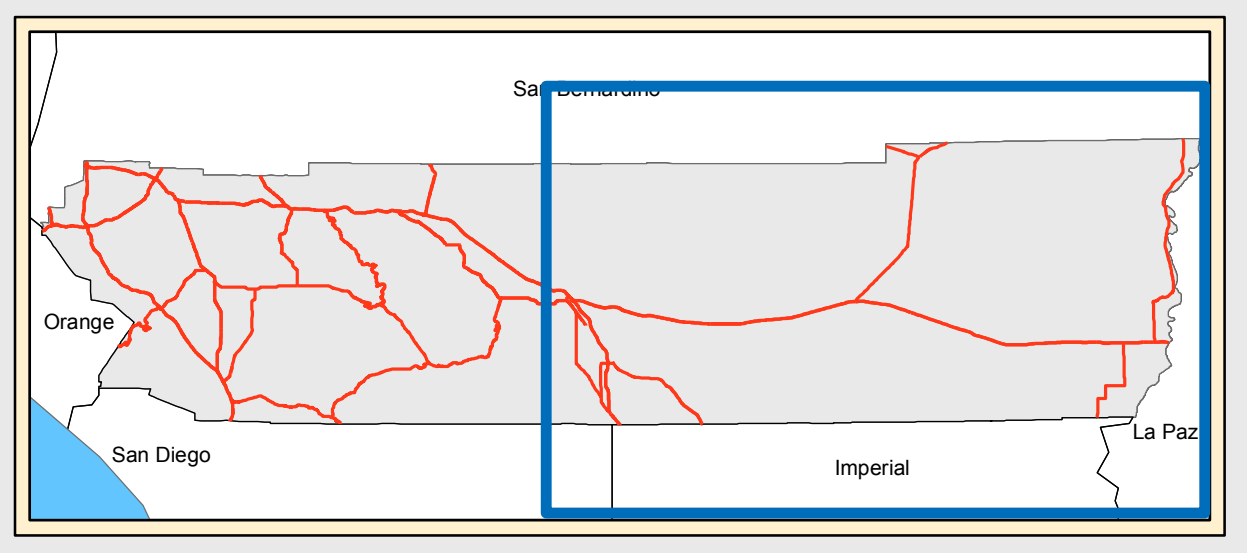


San Diego County

APRIL 22, 2009
 COUNTY OF RIVERSIDE
 J. CLARK

0 2 4 8 12 Miles

Disclaimer: Maps and data are to be used for reference purposes only. Map features are approximate, and are not necessarily accurate to surveying or engineering standards. The County of Riverside makes no warranty or guarantee as to the content (the source is often third party), accuracy, timeliness, or completeness of any of the data provided, and assumes no legal responsibility for the information contained on this map. Any use of this product with respect to accuracy and precision shall be the sole responsibility of the user.



- CRITERIA**
- 1 - MAPPING ERROR
 - 2 - OS-CH INCORRECTLY APPLIED TO PRIVATE LANDS
 - 3 - INCORRECT PUBLIC FACILITY DESIGNATIONS
 - 4 - INCORRECT OPEN SPACE - CONSERVATION DESIGNATION ON PRIVATE LANDS
 - 5 - INCORRECT OPEN SPACE - RECREATION DESIGNATION
 - 6 - AREAS THAT NEED TO BE DESIGNED FOR PUBLIC FACILITY USE
 - 7 - LAND USE DESIGNATION NEEDS TO BE CHANGED BECAUSE TR/PLOT PLAN SUBMITTED TO THE ADOPTION BUT DURING THE GP 2003 UPDATE AND WAS APPROVED
 - 8 - EXECUTIVE DIRECTIVE

EASTERN RIVERSIDE COUNTY PROJECTS

CHIRIACO SUMMIT R.V.S.A.
 COMMUNITY CENTER L.U & OVERLAY
 NORTH SHORE POLICY OVERLAY
 SOUTH VALLEY OVERLAY
 VISTA SANTA ROSA OVERLAY

AGRICULTURE	PARCEL SPECIFIC LANDUSE CHANGES
RURAL	AREA PLAN BOUNDARIES
RURAL COMMUNITY	SUPERVISORAL DISTRICT
OPEN SPACE	COMMUNITY CENTERS & OVERLAYS
COMMUNITY DEVELOPMENT	TRIBAL LANDS
	CITIES
	WATER BODIES