



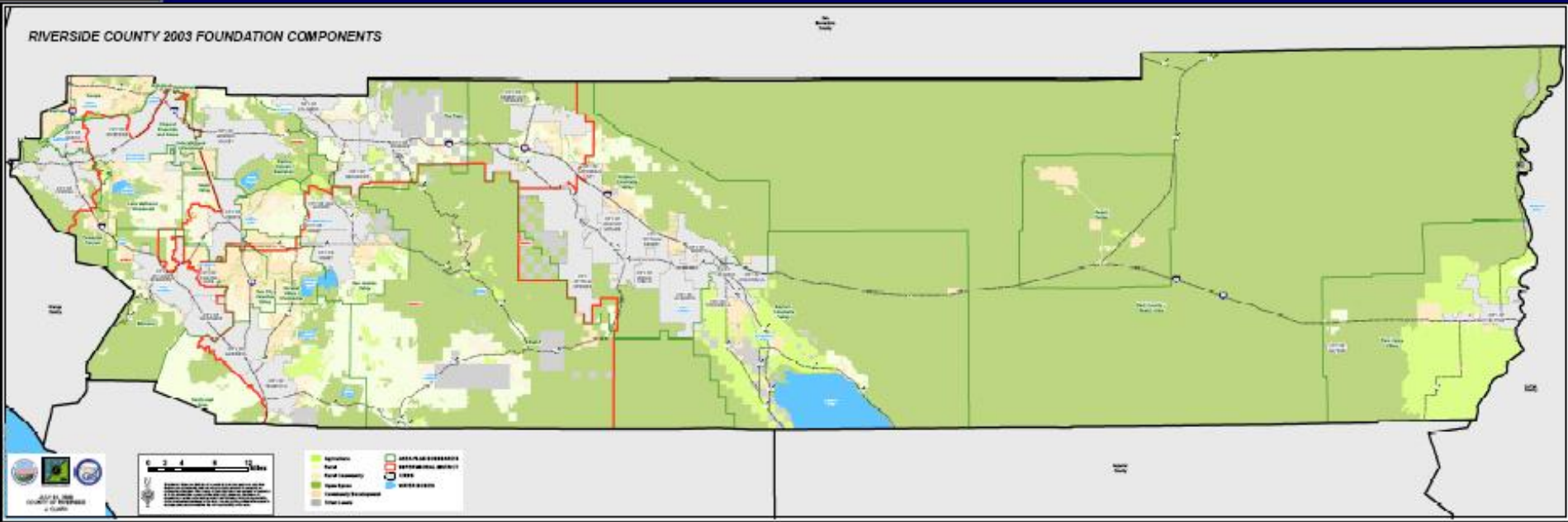
Agenda Item No. 6.1

Riverside County Planning Commission

Initiation Process – General Plan Amendment 960



General Plan Amendment 960 – First 5-Yearly Update



- Administration Element provides guidance to implement a Certainty System that strike sustainable balance between
 - Certainty of land uses
 - Flexibility in their implementation



General Plan Amendment 960 – First 5-Yearly Update

This cycle occurs every five years after adoption of the General Plan. It:

- a) Is initiated by the County.
- b) Is primarily intended to assess General Plan progress and issues related to its implementation.
- c) Is the only time, other than a declared extraordinary amendment or an Agriculture Foundation Component amendment, that a Foundation Component of the General Plan may be considered for change.



General Plan Amendment 960 – First 5-Yearly Update

This cycle occurs every five years after adoption of this General Plan. It:

- d) May include policy, entitlement and technical amendment proposals determined to be an appropriate part of this cycle.
- e) Extends planning projections another five years into the future, identifying required adjustments in the General Plan, if any, to accommodate anticipated needs.
- f) Includes special considerations to reassess the Vision and Planning Principles and recommit to them. This five-year interval also permits a comprehensive evaluation of CETAP and MSHCP progress, with refinements as necessary to enable further implementation of these programs as they relate to the General Plan.



General Plan Amendment 960 – First 5-Yearly Update

- Significant Updates to General Plan Elements
 - Land Use Element
 - Circulation Element
 - Multi-Purpose Open Space Element
 - Safety Element
 - Housing Element
 - Air Quality Element
 - Administration Element
- Consideration of New Element
 - Healthy Community Element



General Plan Amendment 960 – First 5-Yearly Update

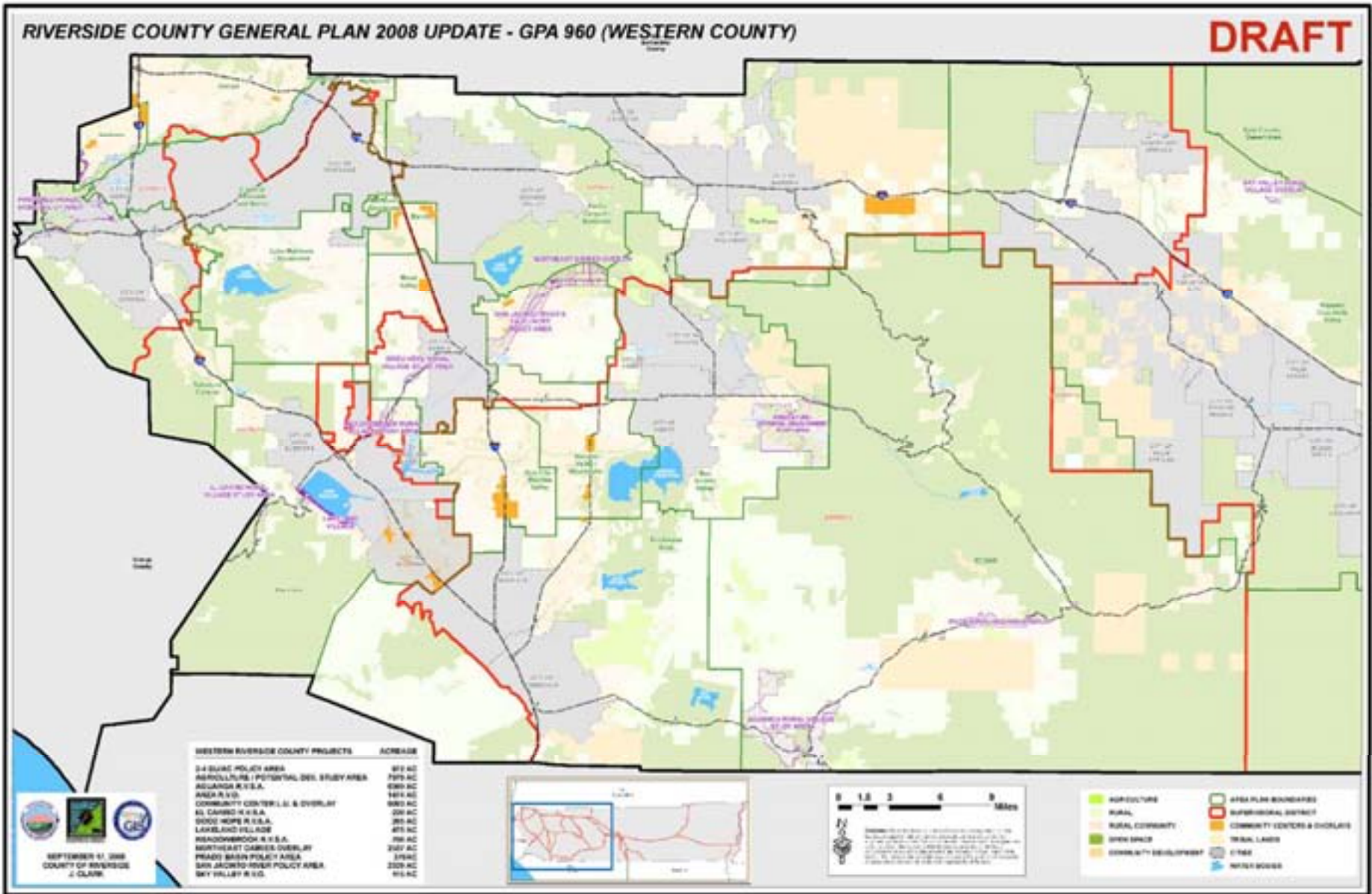
- Significant Updates to Area Plans
 - Eastern Coachella Valley Area Plan:
 - Vista Santa Rosa Overlay
 - South Valley Overlay
 - Chiriaco Summit Rural Village Overlay
 - Fish Farm Inventory
 - North Shore Policy Area
 - Eastvale Area Plan:
 - Prado Basin Policy Area
 - Elsinore Area Plan:
 - Lakeland Village Land Use Inventory
 - El Cariso Rural Village Study Area
 - Meadowbrook Rural Village Study Area



General Plan Amendment 960 – First 5-Yearly Update

- Significant Updates to Area Plans
 - Lakeview Nuevo Area Plan:
 - Northeast Dairies Overlay
 - San Jacinto River and 2-4 DU/Ac Policy Area
 - Mead Valley Area Plan:
 - Goodhope Rural Village Study Area
 - Riverside Extended Mountainous Area Plan (REMAP):
 - Anza Rural Village Overlay
 - Aguanga Rural Village Study Area
 - San Jacinto Valley Area Plan:
 - Agriculture/Development Potential Study Area
 - Western Coachella Valley Area Plan:
 - Sky Valley Rural Village Overlay
 - Thousand Palms Land Use Inventory

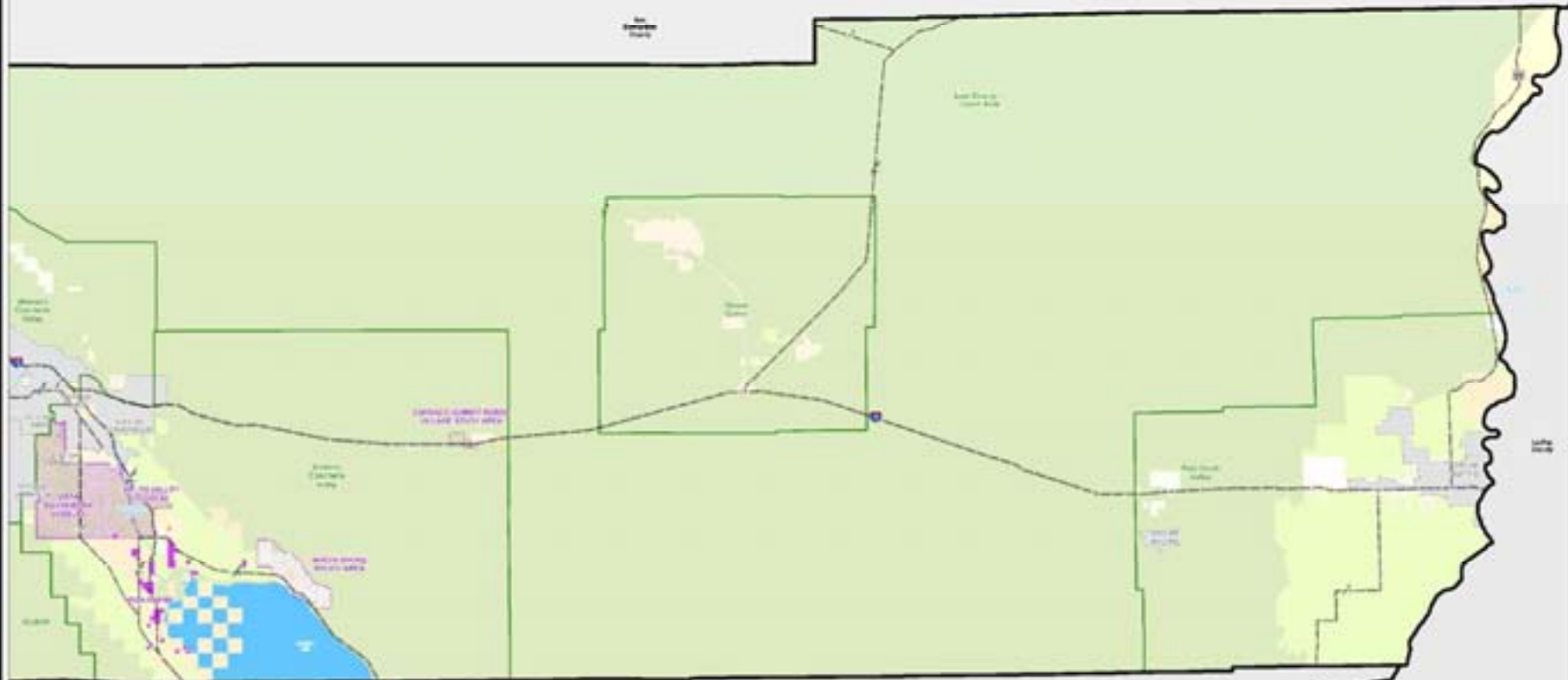
General Plan Amendment 960 – First 5-Yearly Update



General Plan Amendment 960 – First 5-Yearly Update

RIVERSIDE COUNTY GENERAL PLAN 2008 UPDATE - GPA 960 (EASTERN COUNTY)

DRAFT



SEPTEMBER 11, 2008
COUNTY OF RIVERSIDE
CLARK



EASTERN RIVERSIDE COUNTY PROJECTS	ACRES
COLORADO SUMMIT W & A COMMUNITY CENTER L.O. & OVERLAY	474 AC
FISH HARBORS	141 AC
NORTH SHORE POLICY OVERLAY	210 AC
SOUTH VALLEY OVERLAY	824 AC
WEST VALLEY AREA OVERLAY	2940 AC
	2110 AC

AGRICULTURE	AREA PLAN BOUNDARIES
RURAL	MUNICIPAL DISTRICT
RURAL COMMUNITY	COMMUNITY CENTERS & OVERLAYS
OPEN SPACE	TRAIL LAYERS
COMMUNITY DEVELOPMENT	OTHER
	WATER BODIES



General Plan Amendment 960 – First 5-Yearly Update

- **Parcel Specific Land Use Map Changes:**
 1. Land use designations incorrectly/not identified
 2. Open Space – Conservation Habitat (OS-CH) incorrectly assigned
 3. Public Facilities (PF) incorrectly applied
 4. Open Space – Conservation (OS-C) incorrectly applied
 5. Open Space – Recreation (OS-R) incorrectly assigned
 6. Land use designations incorrectly applied to Public Facilities
 7. Land Use designations inappropriate for actual parcel sizes
 8. Executive Directives

- **RCA Acquired Land**



General Plan Amendment 960 – First 5-Yearly Update

Only one finding is necessary to initiate the 5-yearly review and update:

- “The foundation change is based on ample evidence that new conditions or circumstances disclosed during the review process justify modifying the General Plan, that the modifications do not conflict with the overall Riverside County Vision, and that they would not create an internal inconsistency among the elements of the General Plan”.



General Plan Amendment 960 – First 5-Yearly Update

- Staff Comments that:
 - The appropriate findings per the General Plan Administration Element can be made; and
 - The adoption of an order initiating proceedings for General Plan Amendment No. 960 would be appropriate.



Thank you