



Agenda Item No. 6.1

Riverside County Planning Commission

General Plan Amendment No. 1065

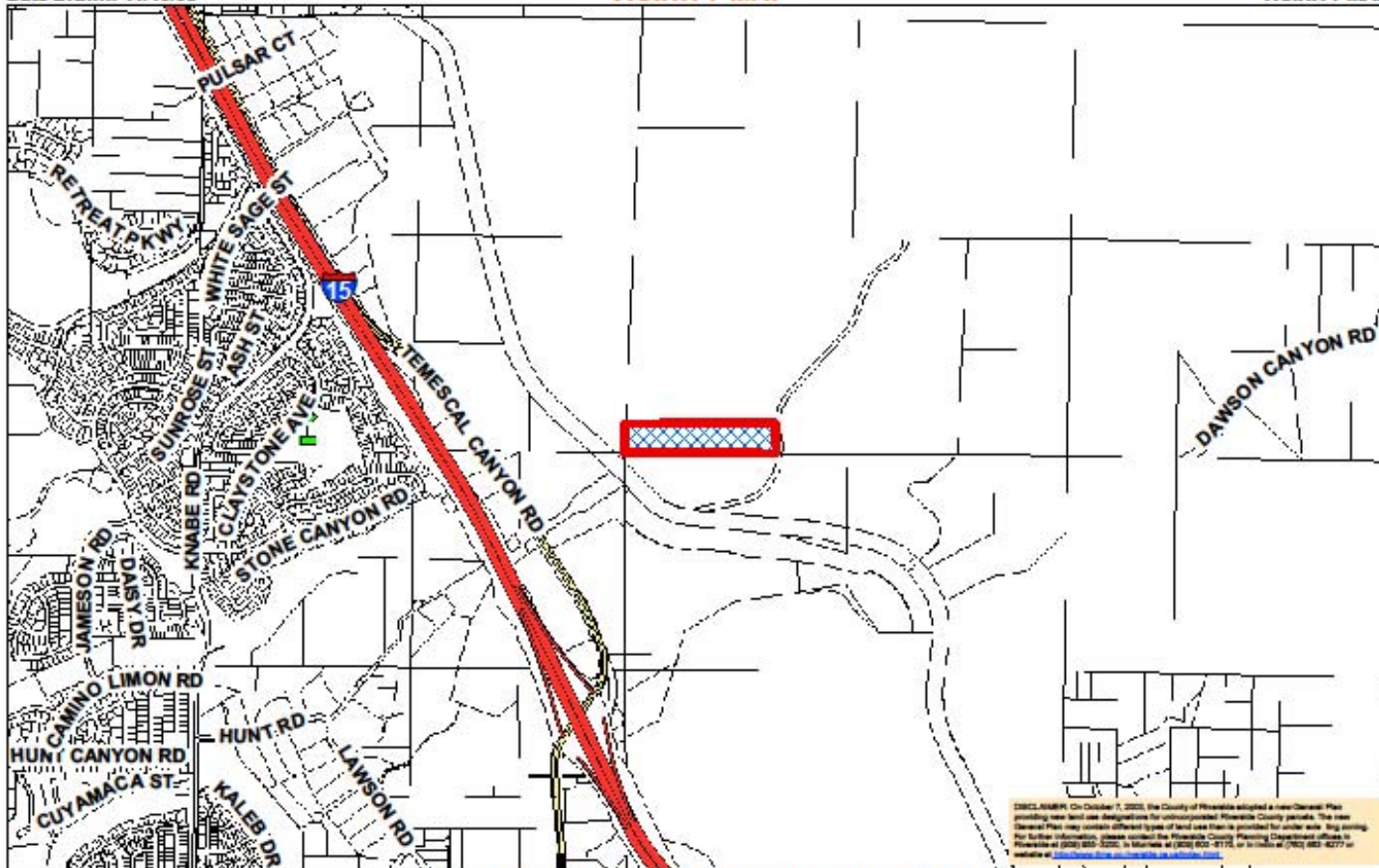


Vicinity Map

Supervisor Buster
District 1
Date Drawn: 11/19/08

GPA01065
VICINITY MAP

Planner: Ryan Fowler
Date: 12/03/08
VICINITY MAP



DISCLAIMER: On October 7, 2008, the County of Riverside adopted a new General Plan providing new land use designations for unincorporated Riverside County parcels. The new General Plan may contain different types of land use than is provided for under state law. For further information, please contact the Riverside County Planning Department office in Riverside at (951) 852-5200, in Murietta at (951) 852-4110, or in Indio at (760) 867-8277 or visit us at <http://www.riversidecountyplanning.com>.

RIVERSIDE COUNTY PLANNING DEPARTMENT

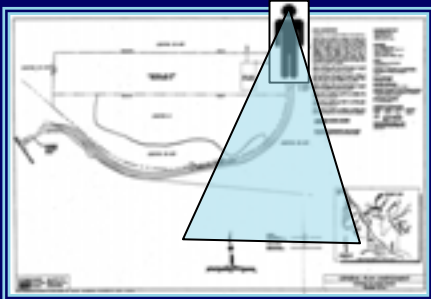
Area: Glen Ivy
Township/Range: T4SR6W
Section: 26

Assessors
Blk. Pg. 283-12
Thomas
Bros. Pg. 804 E3





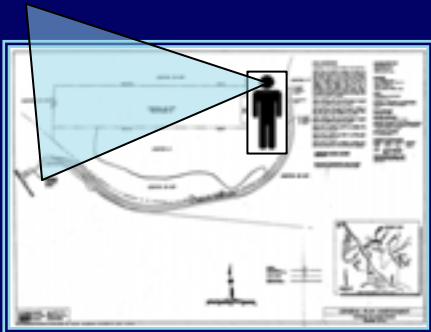
Site Photo 1



Northeasterly corner looking south



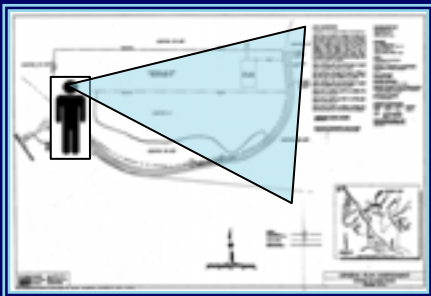
Site Photo 2



Northeasterly corner looking west



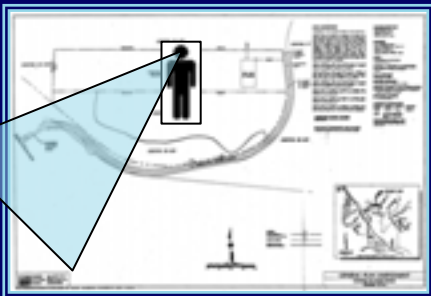
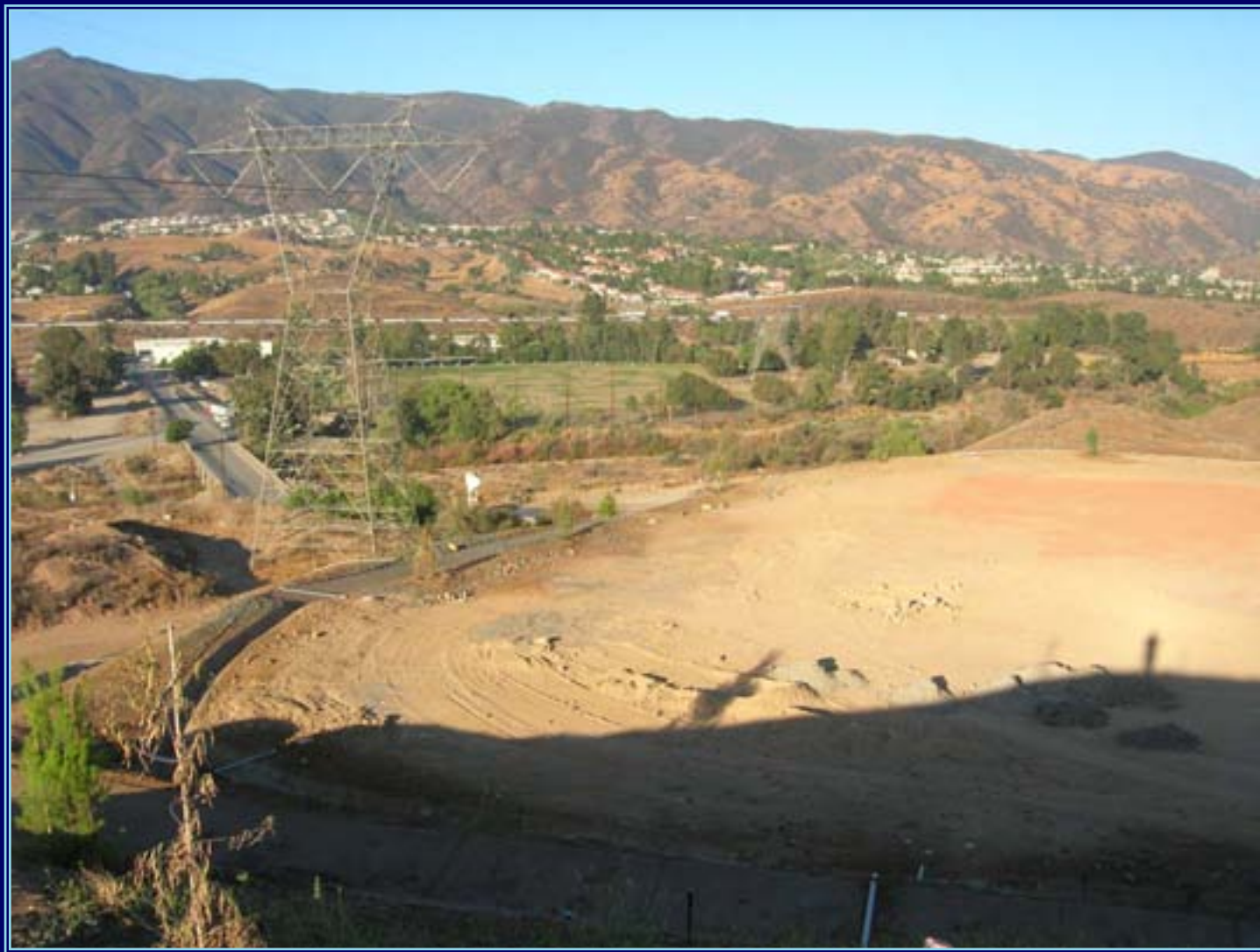
Site Photo 3



Southwesterly corner looking east



Site Photo 4



Southerly boundary looking southwesterly

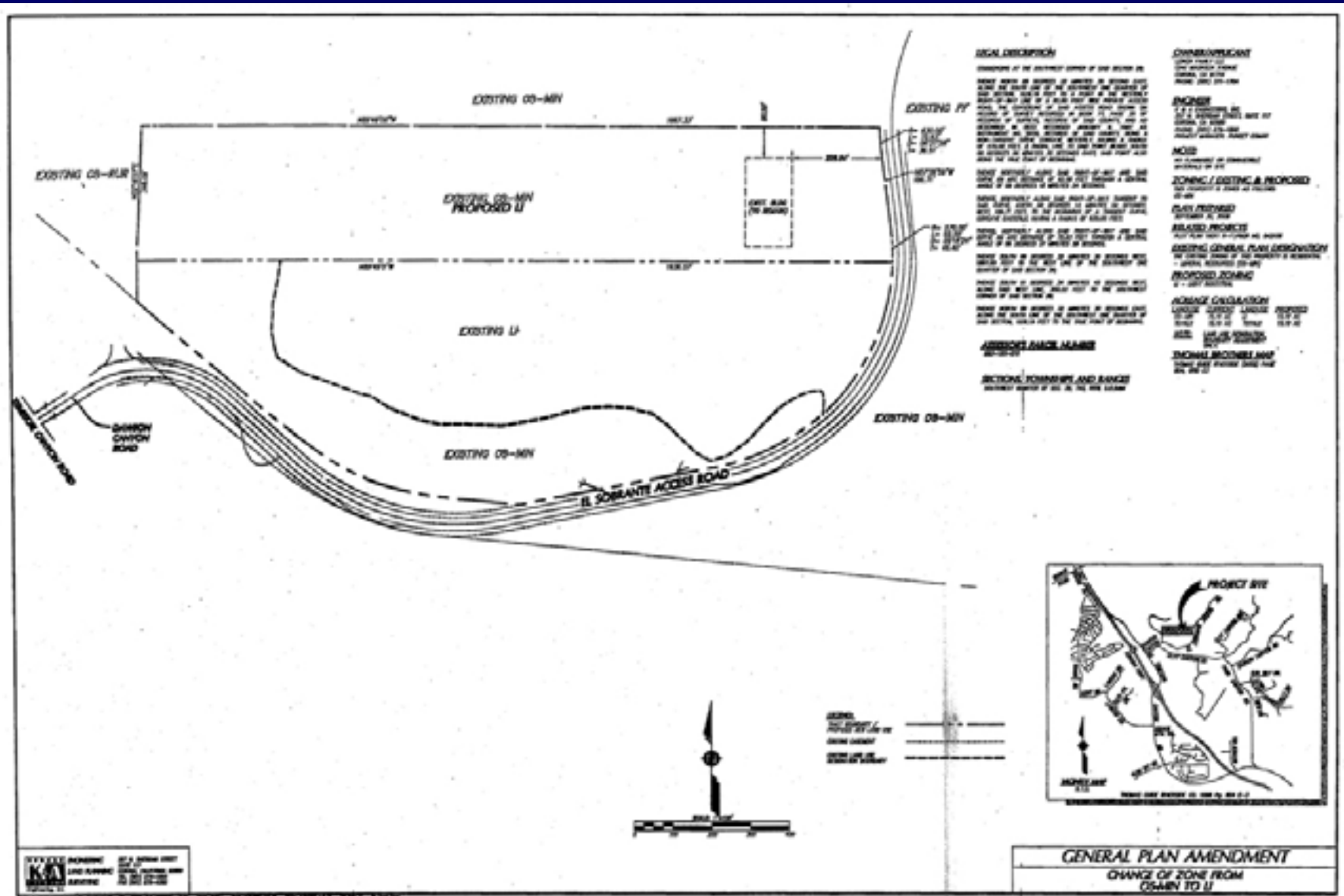


Recommendations

The Planning Director recommends that the appropriate findings per the General Plan Administration Element can be made and that the Planning Commission recommend to the Board of Supervisors to adopt an order initiating proceedings for General Plan Amendment No. 1065 as modified to change the land use designation from Open Space: Mineral Resources (OS:MIN) to Community Development: Light Industrial (CD:LI). The initiation of proceedings by the Board of Supervisors for the amendment of the General Plan, or any element thereof, shall not imply any such amendment will be approved.



Site Plan





Land Use

Current Land Use:

Mass graded vacant land with existing 27,000 sq. ft. office and truck maintenance facility

Surrounding Land Uses:

North:

Surface mining activities

South:

Partially graded vacant land

East:

Vacant land

West:

Vacant land

