

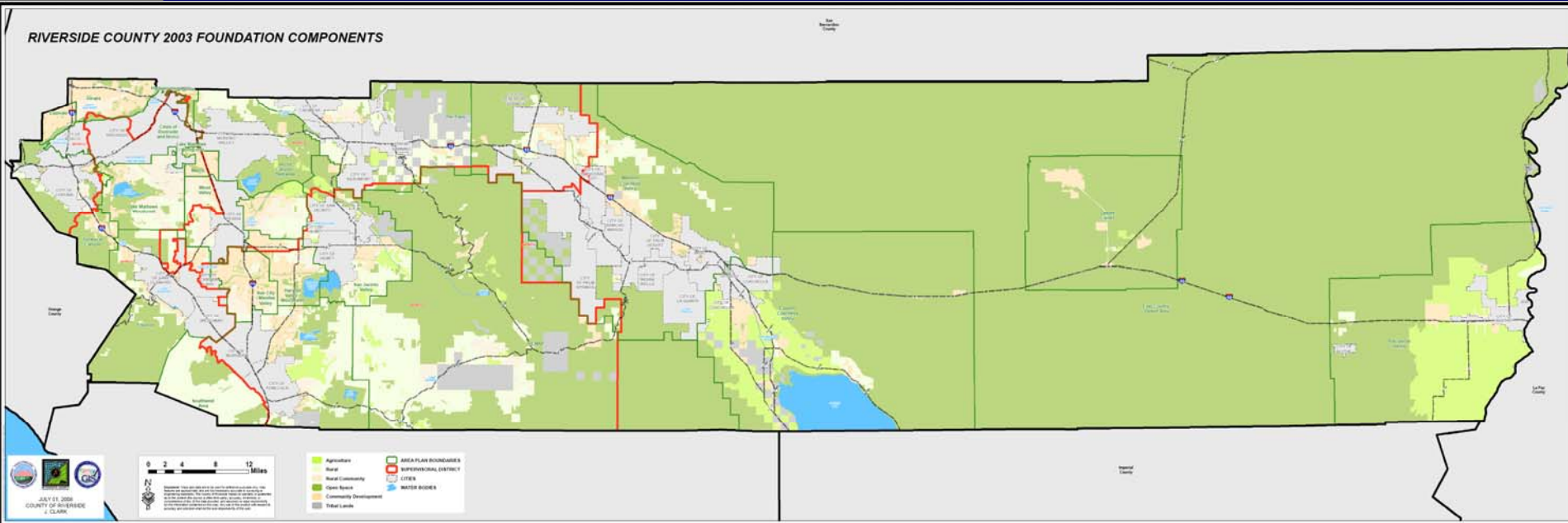


# **General Plan 5-Year Update Project General Plan Amendment 960 (GPA 960)**

**Tribal Consultation- per SB 18**



# Overview of the Project - General Plan Amendment 960



- RCIP General Plan Certainty System
- Certainty System to strike sustainable balance between certainty of land uses and flexibility in their implementation

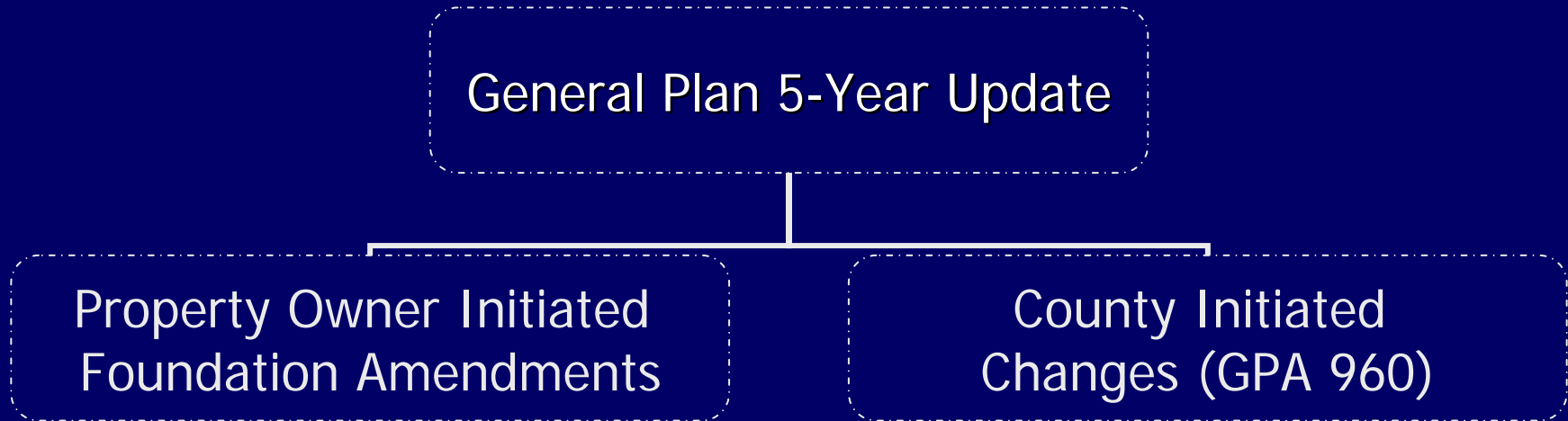


## Overview of the Project - General Plan Amendment 960

- Certainty System review occurs every five years after adoption of the General Plan. It:
  - Is intended to assess General Plan progress and issues related to its implementation.
  - May include policy, entitlement and technical amendment proposals.
  - Includes special considerations to reassess the General Plan's Vision and Planning Principles and recommit to them.



## Overview of the Project - General Plan Amendment 960



- County Initiated Changes – GPA 960
- Property Owner Initiated Foundation Amendment Requests
  - Processed Separately
  - Considered in cumulative impact analysis for GPA 960



## General Plan Amendment 960 – Proposed Changes – Elements

- General Plan Amendment 960
  - Review and update of GP Elements
  - Review and update of Area Plans
  - Review and update of parcel specific land use designations



## General Plan Amendment 960 – Proposed Changes – Elements

- General Plan Elements
  - Land Use Element
    - Incidental Commercial Policies
    - Community Centers
    - Sphere of Influence Policies



## General Plan Amendment 960 – Proposed Changes – Elements

- General Plan Elements
  - Circulation Element
    - Circulation Map and Text update
    - Trails Map and Text update



## General Plan Amendment 960 – Proposed Changes – Elements

- General Plan Elements
  - Multi-Purpose Open Space Element
    - Energy Policies
    - Water Conservation Policies
    - Arroyos/Watershed Protection Policies



## General Plan Amendment 960 – Proposed Changes – Elements

- General Plan Elements
  - Air Quality Element
    - Greenhouse Gas (GHG) Policies and Programs
    - Appendix N: GHG Implementation Measures



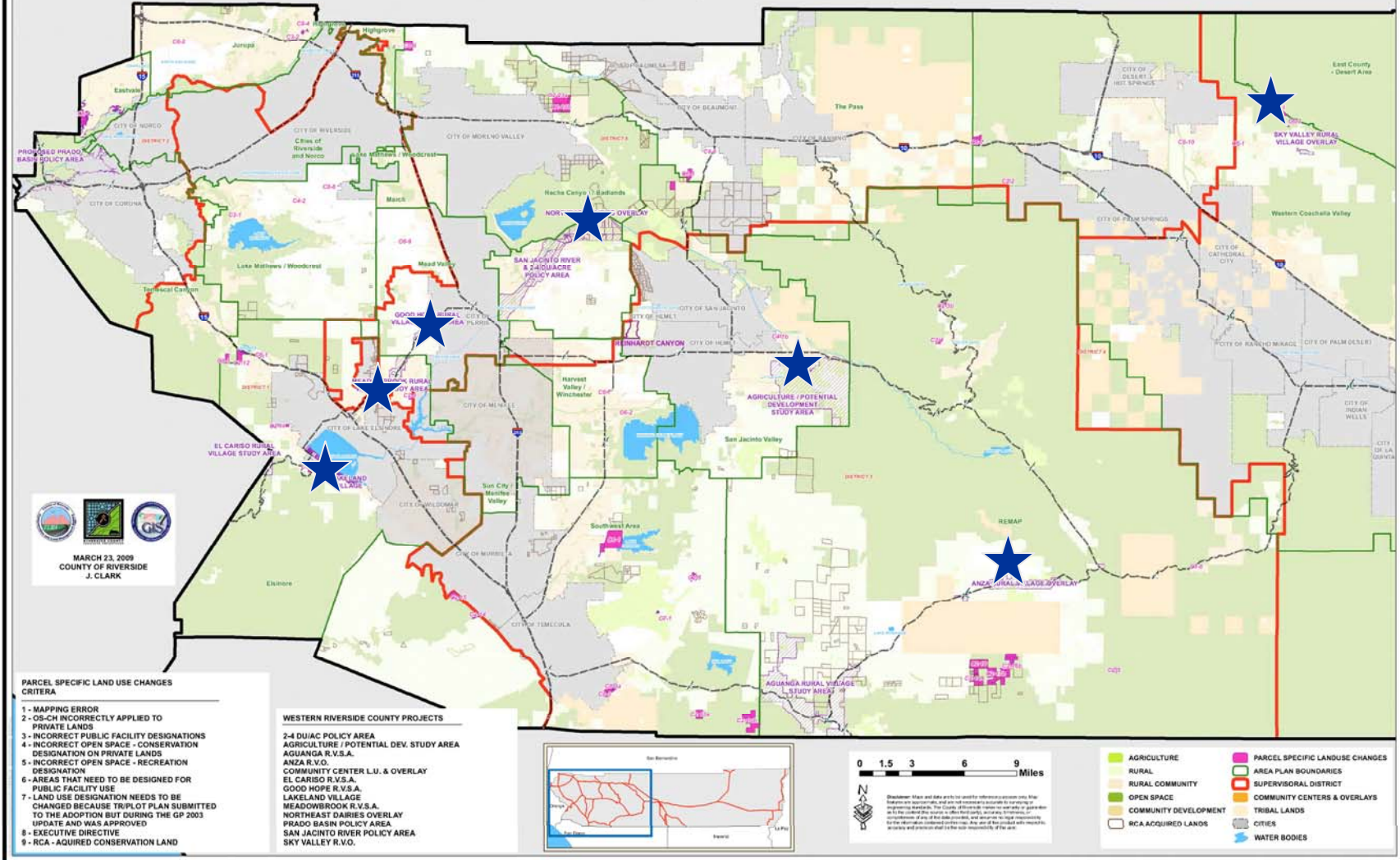
## General Plan Amendment 960 – Proposed Changes – Elements

- General Plan Elements
  - Technical Appendices
    - Appendix E: Socioeconomic Projections and Assumptions
    - Appendix F: Population and Employment Forecasts
    - Appendix K: Implementation Program

# General Plan Amendment 960 – Proposed Changes – Area Plans



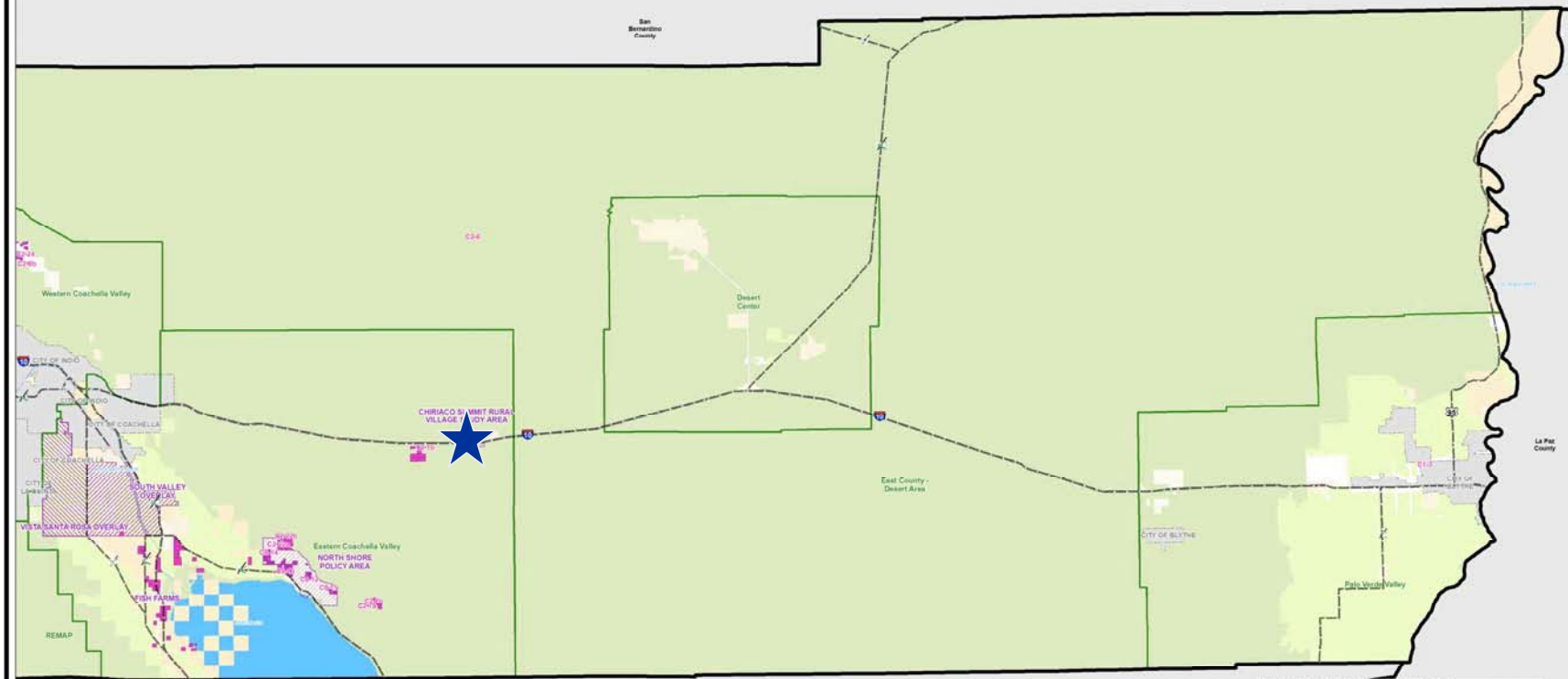
**FIGURE 3a - KEY REGIONS OF INTEREST FOR GPA 960 (WESTERN COUNTY)**





# General Plan Amendment 960 – Proposed Changes – Area Plans

FIGURE 3b - KEY REGIONS OF INTEREST FOR GPA 960 (EASTERN COUNTY)



San Diego County

MARCH 23, 2009  
COUNTY OF RIVERSIDE  
J. CLARK

0 2 4 8 12 Miles

Disclaimer: Maps and data are used for reference purposes only. They do not constitute a warranty or representation of any kind. The County of Riverside makes no warranty or representation as to the accuracy of the information shown on this map. The use of this product with respect to any and all parcels shall be the sole responsibility of the user.



- PARCEL SPECIFIC LAND USE CHANGES CRITERIA**
- 1 - MAPPING ERROR
  - 2 - OS-CH INCORRECTLY APPLIED TO PRIVATE LANDS
  - 3 - INCORRECT PUBLIC FACILITY DESIGNATIONS
  - 4 - INCORRECT OPEN SPACE - CONSERVATION DESIGNATION ON PRIVATE LANDS
  - 5 - INCORRECT OPEN SPACE - RECREATION DESIGNATION
  - 6 - AREAS THAT NEED TO BE DESIGNED FOR PUBLIC FACILITY USE
  - 7 - LAND USE DESIGNATION NEEDS TO BE CHANGED BECAUSE TRIPLOT PLAN SUBMITTED TO THE ADOPTION BUT DURING THE GP 2003 UPDATE AND WAS APPROVED
  - 8 - EXECUTIVE DIRECTIVE

**EASTERN RIVERSIDE COUNTY FOCUS AREAS**

CHIRACO SUMMIT R.V.S.A.  
COMMUNITY CENTER L.U. & OVERLAY  
NORTH SHORE POLICY OVERLAY  
SOUTH VALLEY OVERLAY  
VISTA SANTA ROSA OVERLAY

- AGRICULTURE
- RURAL
- RURAL COMMUNITY
- OPEN SPACE
- COMMUNITY DEVELOPMENT
- PARCEL SPECIFIC LAND USE CHANGES
- AREA PLAN BOUNDARIES
- SUPERVISORIAL DISTRICT
- COMMUNITY CENTERS & OVERLAYS
- TRIBAL LANDS
- CITIES
- WATER BODIES



## General Plan Amendment 960 – Proposed Changes – Area Plans

- Eastern Coachella Valley Area Plan:
  - Chiriaco Summit Rural Village Overlay
  
- Elsinore Area Plan:
  - Lakeland Village Land Use Inventory
  - Meadowbrook Rural Village Study Area
  
- Lakeview Nuevo Area Plan:
  - Business Park Overlay
  
- Mead Valley Area Plan:
  - Goodhope Rural Village Study Area



## General Plan Amendment 960 – Proposed Changes – Area Plans

- Riverside Extended Mountainous Area Plan:
  - Anza Rural Village Overlay – Policy Area
  
- San Jacinto Valley Area Plan:
  - Agriculture/Development Potential Study Area
  
- Western Coachella Valley Area Plan:
  - Sky Valley Rural Village Overlay
  - Thousand Palms Land Use Inventory



## General Plan Amendment 960 – Proposed Changes – Parcel Specific

- Land Use Map Change Criteria:
  1. Land use designations incorrectly / not identified
  2. Open Space – Conservation Habitat (OS-CH) incorrectly assigned
  3. Public Facilities (PF) incorrectly applied
  4. Open Space – Conservation (OS-C) incorrectly applied
  5. Open Space – Recreation (OS-R) incorrectly assigned
  6. Land use designations incorrectly applied to Public Facilities
  7. Land Use designations inappropriate for actual parcel sizes
  8. Executive Directives



## General Plan Amendment 960 – Public Hearings to Date

- PC Public Workshop
  - July 09, 2008
  - June 24, 2009
  - August 19, 2009
- General Plan Initiation Process
  - Planning Commission: October 01, 2008
  - Board of Supervisors: October 21, 2008
- General Plan Advisory Committee
  - On-going public meetings every 6 weeks from October of 2008 to October of 2009



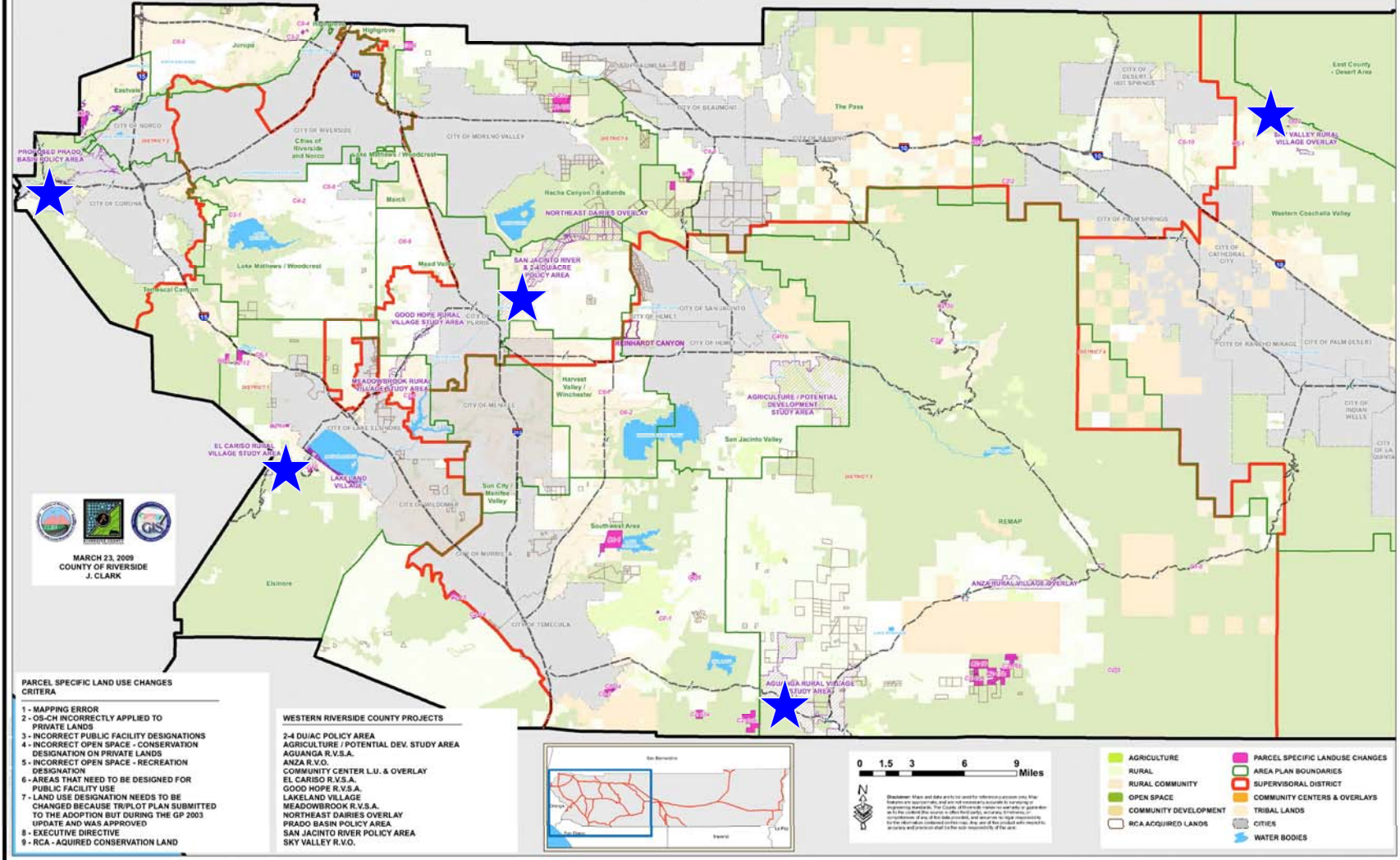
## General Plan Amendment 960 – Project Status

- **CEQA Compliance**
  - **Initial Study**
    - EA 41788
    - Notice of Preparation for a Program Environmental Impact Report (EIR 521)
      - April 13, 2009
  - **Scoping Session**
    - East County: April 27, 2009
    - West County: May 4, 2009
  - **Draft EIR**
    - Screen check EIR in Summer 2010

# General Plan Amendment 960 – Proposed Changes – Area Plans



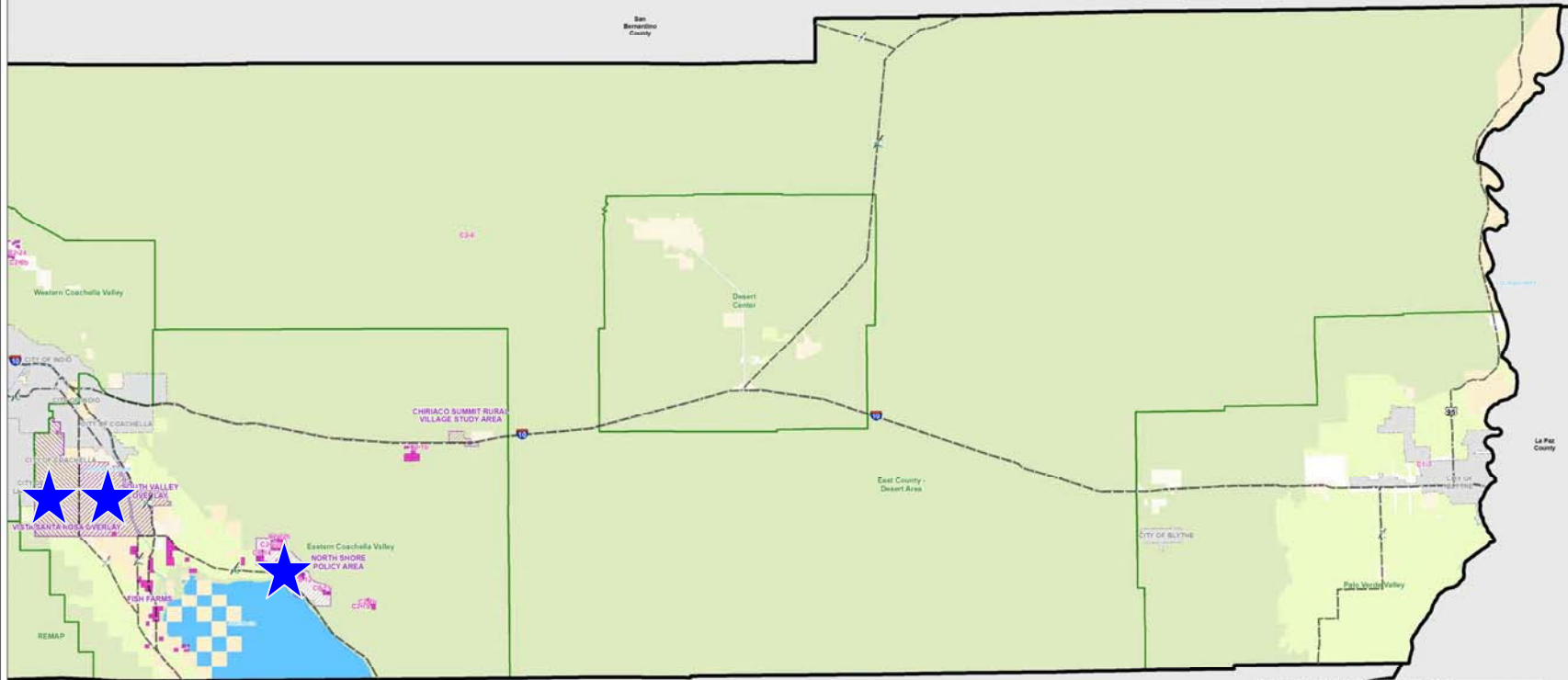
**FIGURE 3a - KEY REGIONS OF INTEREST FOR GPA 960 (WESTERN COUNTY)**  
San Bernardino County





# General Plan Amendment 960 – Proposed Changes – Area Plans

FIGURE 3b - KEY REGIONS OF INTEREST FOR GPA 960 (EASTERN COUNTY)



San Diego County  
 Imperial County  
 MARCH 23, 2009  
 COUNTY OF RIVERSIDE  
 J. CLARK



- PARCEL SPECIFIC LAND USE CHANGES CRITERIA**
- 1 - MAPPING ERROR
  - 2 - OS-CH INCORRECTLY APPLIED TO PRIVATE LANDS
  - 3 - INCORRECT PUBLIC FACILITY DESIGNATIONS
  - 4 - INCORRECT OPEN SPACE - CONSERVATION DESIGNATION ON PRIVATE LANDS
  - 5 - INCORRECT OPEN SPACE - RECREATION DESIGNATION
  - 6 - AREAS THAT NEED TO BE DESIGNED FOR PUBLIC FACILITY USE
  - 7 - LAND USE DESIGNATION NEEDS TO BE CHANGED BECAUSE TRIPLOT PLAN SUBMITTED TO THE ADOPTION BUT DURING THE GP 2003 UPDATE AND WAS APPROVED
  - 8 - EXECUTIVE DIRECTIVE

- EASTERN RIVERSIDE COUNTY FOCUS AREAS**
- CHIRIACO SUMMIT R.V.S.A.
  - COMMUNITY CENTER L.U. & OVERLAY
  - NORTH SHORE POLICY OVERLAY
  - SOUTH VALLEY OVERLAY
  - VISTA SANTA ROSA OVERLAY
- AGRICULTURE
  - RURAL
  - RURAL COMMUNITY
  - OPEN SPACE
  - COMMUNITY DEVELOPMENT
  - PARCEL SPECIFIC LAND USE CHANGES
  - AREA PLAN BOUNDARIES
  - SUPERVISORAL DISTRICT
  - COMMUNITY CENTERS & OVERLAYS
  - TRIBAL LANDS
  - CITIES
  - WATER BODIES



## General Plan Amendment 960 – Project Status

- Independent GPA 960 Items
  - GPA 1083 - Policies for Cultural Resources of the Multi-Purpose Open Space Element
  - GPA 1088 - Policies for Indian Fee Land of the Land Use Element



## General Plan Amendment 960 – Project Status

- Independent GPA 960 Items
  - GPA 1093 - Safety Element Maps
  - GPA 1075 – Administration Element, Aguanga Rural Village Study Area - Riverside Extended Mountainous Area Plan, and El Cariso Rural Village Study Area - Elsinore Area Plan



## General Plan Amendment 960 – Project Status

- Independent GPA 960 Items
  - Healthy Communities Element
  - Housing Element



## General Plan Amendment 960 – Project Status

- Independent GPA 960 Items
  - Vista Santa Rosa - Eastern Coachella Valley Area Plan
  - Anza - Riverside Extended Mountainous Area Plan
  - Incentive Program – Countywide



## General Plan Amendment 960 – Project Status

- Independent GPA 960 Items
  - Northshore Policy Area – Eastern Coachella Valley Area Plan
  - 2-4 du Policy Area – Lakeview Nuevo Area Plan
  - Prado Dam Policy Area – Eastvale Area Plan



## General Plan Amendment 960 – Next Steps

- Next Steps – GPA 960
  - General Plan Advisory Committee Spring 2010
  - Planning Commission Workshop Spring 2010
  - Draft EIR Summer 2010
  - Project adoption late 2010-early 2011



## General Plan Amendment 960 – Next Steps

- Next Steps – SB 18 Consultation
  - Additional Tribal Consultation upon request
  - Contact Information:

Phayvanh Nanthavongdouangsy

[pnanthav@rctlma.org](mailto:pnanthav@rctlma.org)

951-955-6573



# Comments/Questions ?



*Thank you*