

CONFIGURATION AT INTERSECTION
(SEE SHEET 2 OF 2 FOR TRANSITIONS)

GENERAL CONFIGURATION

NOT TO SCALE

NOTE:

1. THICKNESS OF A.B. AND A.C. TO BE DETERMINED BY SOIL TEST AT TIME OF GRADING OPERATIONS.
2. MINIMUM PAVING THICKNESS PER SPECIFICATIONS SECTION 8.07 OF THIS ORDINANCE.
3. SEE STANDARD NO. 113 FOR LANDSCAPED MEDIAN REQUIREMENTS, INCLUDING MEDIAN CURB.
4. CURB AND GUTTER TO BE TYPE "A-8" (STD. NO. 201). 6" CURB IS NOT ALLOWED.
5. DISTANCE FROM SIDEWALK TO R/W, AND TO FLOW LINE, VARIES. SEE STANDARD NO. 404 FOR DETAILS OF MEANDERING SIDEWALK.
6. MAX. WATER DEPTH FOR Q_{10} IS 0.67' TO PROVIDE MIN. 12' DRY LANE.
7. FOR UNDERGROUND UTILITY LOCATIONS SEE STD. NO. 817, SHT. 2 OF 2.

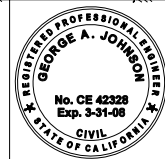
ABBREVIATIONS

- A.B. = AGGREGATE BASE
- A.C. = ASPHALT CONCRETE
- C&G = CURB AND GUTTER
- ETW = EDGE OF TRAVELED WAY
- FL = FLOW LINE
- L/T = LEFT TURN
- O.G. = ORIGINAL GROUND
- R/T = RIGHT TURN
- R/W = RIGHT OF WAY
- TC = TOP OF CURB
- FS = FINISHED SURFACE

APPROVED BY:

George A. Johnson
 DIRECTOR OF TRANSPORTATION
 GEORGE A. JOHNSON, RCE 42328

DATE: 05/01/07

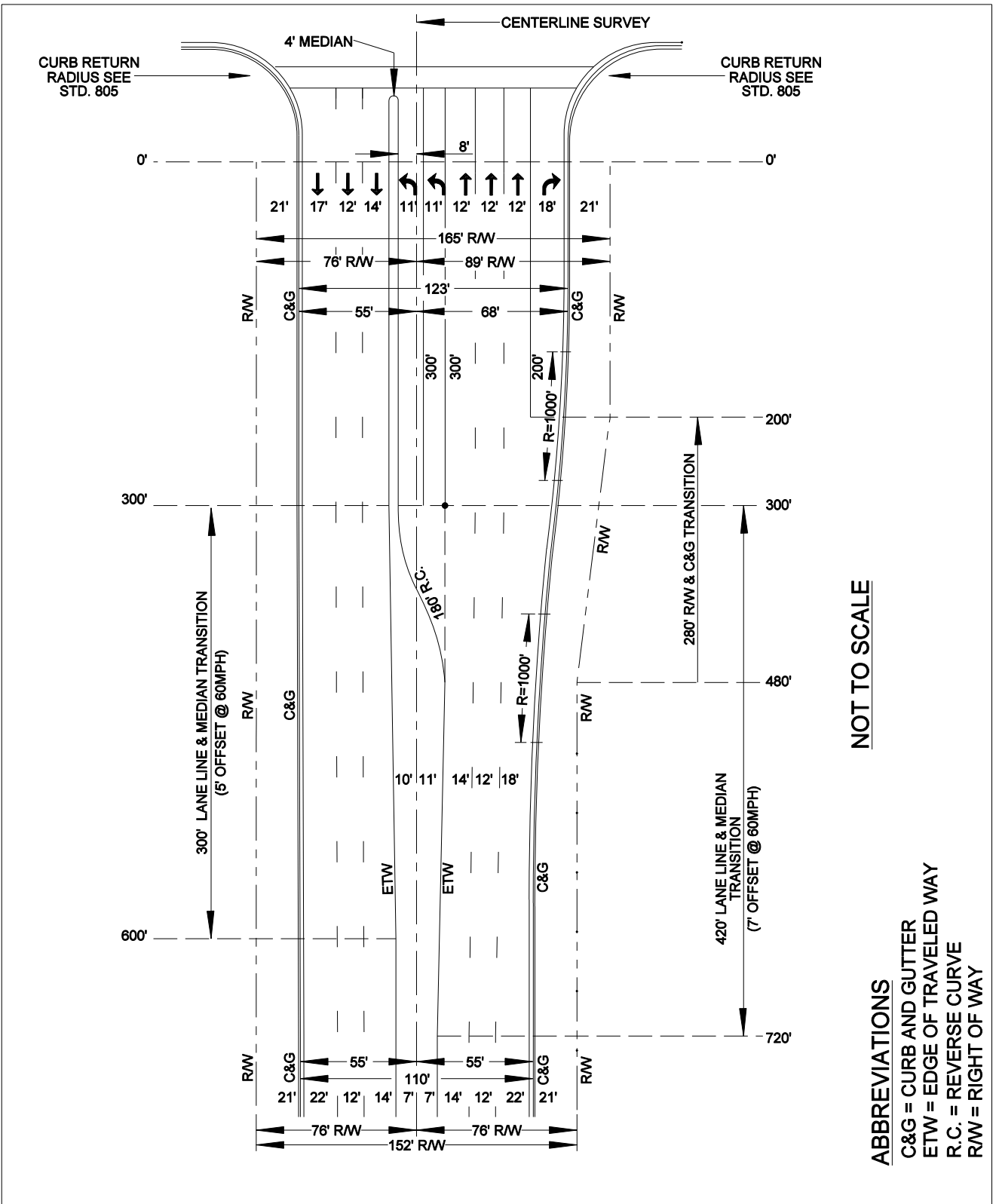


COUNTY OF RIVERSIDE

**URBAN ARTERIAL
HIGHWAY
(152' R/W)**

STANDARD NO. 91 (1 OF 2)

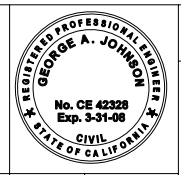
REVISIONS	REV.	BY:	APR'D	DATE	REV.	BY:	APR'D	DATE
	1				4			
	2				5			
	3				6			



NOT TO SCALE

ABBREVIATIONS
 C&G = CURB AND GUTTER
 ETW = EDGE OF TRAVELED WAY
 R.C. = REVERSE CURVE
 R/W = RIGHT OF WAY

APPROVED BY:
George A. Johnson
 DIRECTOR OF TRANSPORTATION
 GEORGE A. JOHNSON, RCE 42328



COUNTY OF RIVERSIDE

**URBAN ARTERIAL
 HIGHWAY
 (152' R/W)**

STANDARD NO. 91 (2 OF 2)

REVISIONS	REV.	BY:	APR'D	DATE	REV.	BY:	APR'D	DATE
	1				4			
	2				5			
	3				6			