
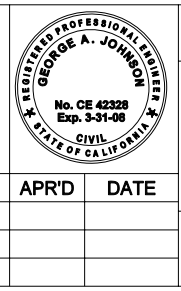


RW	CURVE 1			CURVE 2			CURVE 3													
	A	B	C	R	L	R	R	L	R	L										
56'	28'	18'	10'	110'	52.98'	100'	48.165'	207° 35' 48"	38'	137.66'	48'	173.916'	27° 35' 47"	175.795'	84.672'					
60'	30'	18'	12'	112'	53.72'	100'	47.96'	207° 28' 54"	38'	137.61'	50'	181.06'	27° 28' 54"	177.24'	85.01'					
60'	30'	20'	10'	108.90'	29.45'	100'	44.56'	205° 31' 48"	38'	136.31'	48'	172.18'	25° 31' 48"	184.35'	82.14'					
66'	33'	22'	11'	104.94'	27.47'	100'	40.73'	203° 20' 19"	38'	134.86'	49'	173.90'	23° 20' 19"	195.54'	79.65'					
74'	37'	22'	15'	106.15'	28.08'	100'	40.27'	203° 09' 45"	38'	134.74'	53'	187.93'	23° 09' 45"	198.48'	80.24'					
78'	39'	28'	11'	121.38'	35.69'	100'	50.26'	208° 47' 56"	50'	182.21'	61'	222.30'	28° 47' 56"	177.87'	89.41'					
SCHEDULE "H"										CURVE 1 - EDGE OF AGG. BASE			CURVE 2 - EDGE OF AGG. BASE			CURVE 4 - EDGE OF A.B.				
---	---	12'	---	113.58'	31.79'	---	---	31° 24' 45"	98.05'	55.47'	---	---	215° 36' 50"	38'	143.00'	---	---	4° 12' 05"	831.70'	60.99'

APPROVED BY:  
  
 DATE: 05/01/07  
 DIRECTOR OF TRANSPORTATION  
 GEORGE A. JOHNSON, RCE 42328

REVISIONS		REV.	BY:	APR'D	DATE	REV.	BY:	APR'D	DATE
8-77	11-04	1				4			
11-80, 2-82		2				5			
11-91, 12-97		3				6			



COUNTY OF RIVERSIDE

**OFFSET  
CUL-DE-SAC**

STANDARD NO. 800 (A)