

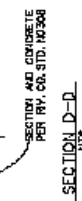
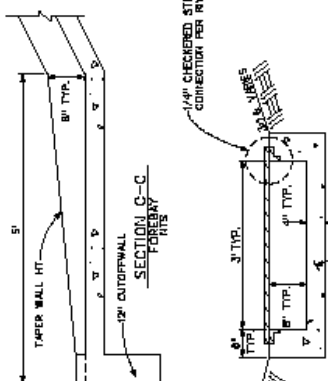
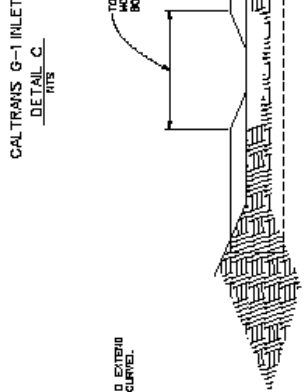
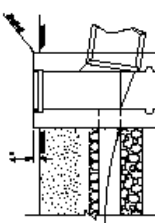
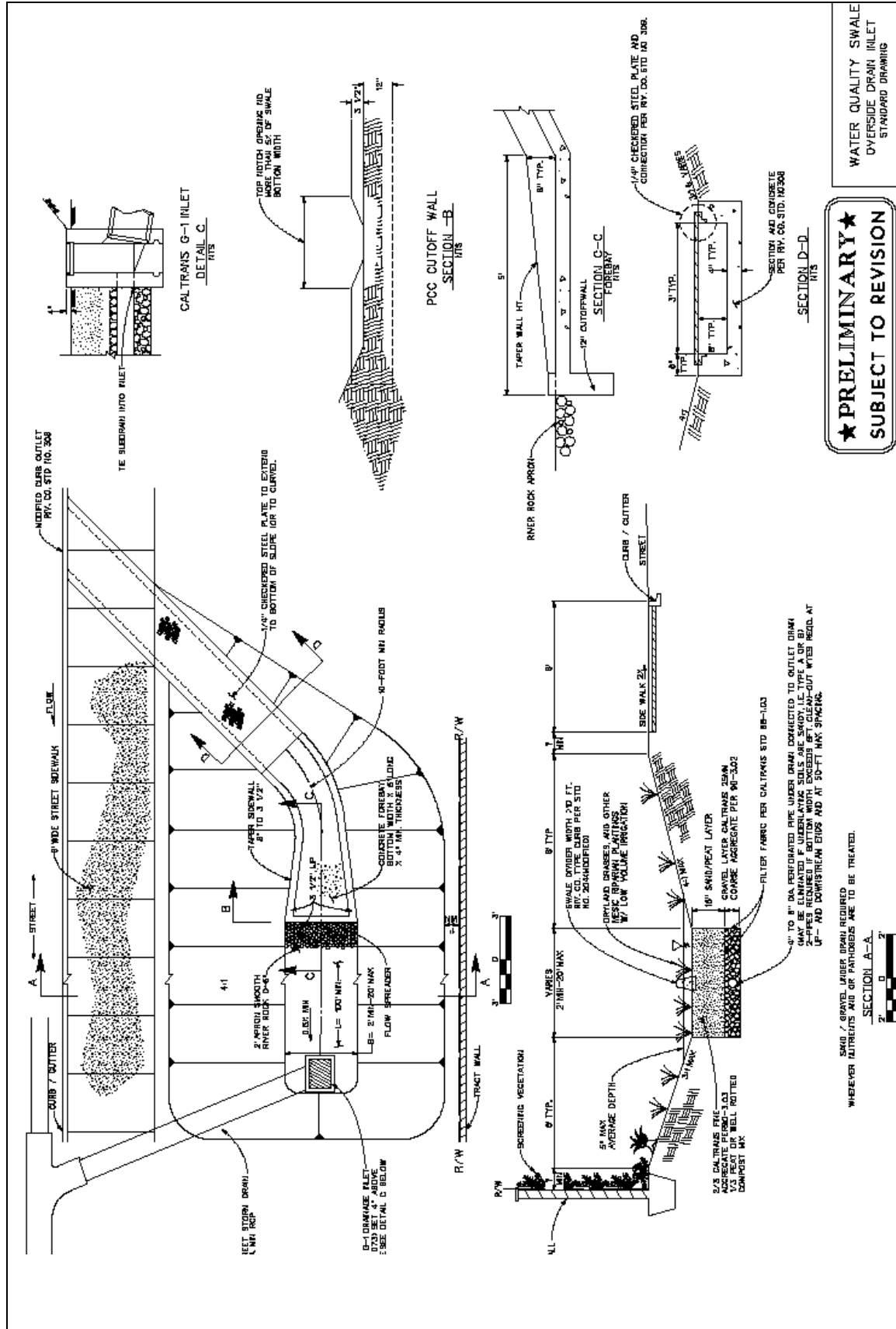
The NPDES facilities are required by the Water Quality Control Board, conditioned and plan checked by Flood Control, and inspected by Flood Control, Transportation or Building and Safety. They may be part of Transportation facilities and/or in the road right-of-way. Plans with NPDES facilities will be approved by Flood Control with a letter stating the conditions have been met, which allows Transportation to sign the street plans.

BMP Facilities Management Agreement:

For On-Site NPDES Facilities, the Developer must execute an Agreement to maintain the BMP facilities. See Appendix A14. This is only executed by Transportation if the facility will drain into a roadway.

NPDES facilities (fossil filters in catch basins) within the road right of way must be maintained through L&LMD 89-1-consolidated. Bio swale maintenance is provided by the Landscape Maintenance District.

When WQMP has been reviewed and is near approval by Flood Control, the BMP Agreement is processed and executed by Transportation and a copy is to be provided to Flood Control for inclusion into the WQMP prior to its approval.



★ PRELIMINARY ★
SUBJECT TO REVISION

WATER QUALITY SWALE
 OVERSIDE DRAIN INLET
 STANDARD DRAWING

WHEREVER GRAVEL LAYER DRAIN REQUIRED.
 WHEREVER ALTRITRIS AND/OR PHOSPHOS ARE TO BE TREATED.



